



THE COOPERATIVE YOUTH EXPECTATION & CONTRIBUTION IN SUPPORT OF THE COOPERATIVE MOVEMENT

**14TH NATIONAL COOPERATIVE YOUTH
SUMMIT**

October 3-5, 2018

SMX Convention Center, SMPremier, Lanang, Davao City

The Philippines



LAMAC MPC

Youth Planet

LABORATORY COOPERATIVE



AFLATOUN

Child-Friendly Banking:
Making savings accessible
and affordable to children

Focus on social and financial
education to the child and youth.

8 DECENT WORK AND
ECONOMIC GROWTH



4 QUALITY
EDUCATION



1 NO
POVERTY



5 GENDER
EQUALITY



10 REDUCED
INEQUALITIES



CAPABILITY BUILDING

Capability Building or also known as C-Build will cater the needs of every young members in enhancing their skills and talents.

Two Clubs

1. CYP Performing Arts
2. CYP Production House

1 NO POVERTY



5 GENDER EQUALITY



10 REDUCED INEQUALITIES



8 DECENT WORK AND ECONOMIC GROWTH



HUB

The business side of the lab coop that generate funds to support social activities for its.

Dormitory, Candle Production, Mug Printing, Hub and Costume Rental, Recycled Paper Products and Risography.

1 NO POVERTY



5 GENDER EQUALITY



8 DECENT WORK AND ECONOMIC GROWTH



12 RESPONSIBLE CONSUMPTION AND PRODUCTION





GENDER EQUALITY

Promoting an equal treatment
Among men and women.

Short film entitled TERESA was created
by the youth and gender sensitivity
trainings conducted to young members.

1 NO
POVERTY



5 GENDER
EQUALITY



SAGEP-YOUTH

SUSTAINABLE AGRICULTURAL EDUCATION PROGRAM

This program educates the youth to engage themselves into agr-enterprises and realize that there is money in agriculture.

Activities:

1. Young Farmers Entrepreneurship Program(Clustering Approach)
2. Youth Transformational Agri-preneurship Training
3. Rural Immersion Camp
4. Organic Farm Tourism

1 NO
POVERTY



15 LIFE
ON LAND



13 CLIMATE
ACTION



2 ZERO
HUNGER





YOUTH ENGAGEMENT
Sustainable
Organic Farm Tourism



YOUTH ENGAGEMENT TO SUSTAINABLE ORGANIC FARM TOURISM



THE MEMORY LANE OF CREATION



In 2016, when the end-in-mind of *'alleviating the plight of farmers'* was impelled by the energy of the youth, a project was brought into being.

Dedication to the mission and core values of *LOVE*, puts every thing into place...



...and so the story of creation

YOUTH ENGAGEMENT WAS THE THING



Preparations: ORGANIZING, TRAINING ,PLANNING AND MOTIVATING



Aftermath: THE FRUITION



Agroentrepreneurship Program



**NATIONAL LIVELIHOOD
DEVELOPMENT CORPORATION**

7th Floor One Corporate Plaza, 845 A, Arnaiz Ave,
Makati City, Philippines 1223



**Jollibee Group
FOUNDATION**



YOUNG FARMERS ENTREPRENUERSHIP PROGRAM

4 CLUSTERS



EVERY THING ORGANIC...



... evolved into some things that bind people

ORGANIC FARM TOURISM

CROP PRODUCTION

FARM TECHNOLOGY

LIVESTOCK & POULTRY

FLOWER FARM

FARM STAY

RURAL IMMERSION

FARM TOURS

LAKBAY ARAL



THE FARM SCHOOL THING

OPPORTUNITIES OPENED UP DOORS FOR FORMALIZATION:

- DA provided the technology and technical know-how, reinforcing the knowledge of LMPC's pool of agriculturists.
- TESDA issued NC2 Level Accreditation to *Lamac Integrated Farm School*, certifying LMPC's instructors and modules.



LAMAC MULTI-PURPOSE INTEGRATED FARM SCHOOL
INTEGRATED ORGANIC FARM
LAMAC, PINAMUNGAJAN, CEBU



Registered Programs with the Technical Education and Skills Development Authority
under the
Unified TVET Program Registration and accreditation System (UTPRAS)



FARMING BECOMES A CAREER. ADDING MORE LIGHT TO A BRIGHTER PROSPECT

THE THINGS THAT COUNT

The FARM supplies organic vegetables, poultry and meat products to institutional markets



... and generating monthly averages of:

- **PhP 1,500,000.00 GROSS SALES** in less than 2 years of operation*



The YOUTH ENGAGEMENT
Sustainable
Organic Farm Tourism *Project*

may be moving towards sustainability or the co-op is achieving greater financial gains but the work towards agricultural development and poverty alleviation in the countryside is far from over.

Moving on to the

NEXT FRONTIER

BREAKING BARRIERS OF POVERTY



POVERTY RULES



Agricultural sectors are the poorest in a land-based Philippine economy

- THE COUNTRY'S POVERTY INCIDENCE STANDS AT 25.8%.
 - 1 OUT OF 5 FAMILIES IS HAVING INCOME FALLING BELOW THE POVERTY THRESHOLD INSUFFICIENT IN MEETING THE MOST BASIC NEEDS.
- OF THE TOTAL FAMILIES LIVING BELOW POVERTY LINE
 - 34.6% OR 8M FAMILIES ARE FARMERS
 - 34% OR 7.9M FAMILIES ARE FISHER FOLKS

UNLESS CONTROL OF RESOURCES AND ACCESS TO CAPITAL ARE
IN THE HANDS OF THE FARMERS, NO GENUINE AGRICULTURAL
DEVELOPMENT IS REALIZABLE.



YOUTH ENGAGEMENT

PHASE III:

Sustainable
Organic Farm Tourism

BUILDING FARM VILLAGES

**The Hidden Valley Organic Farm as a model of
sustainability...**

- *consolidating technologies provided by various agencies and*
- *financial backing extended by social enterprise organizations*

**...is a prototype for replication in a 20-hectare land dubbed as
Sustainable Organic Farm Town (SOFT)...**

- *with 400 lots at 500 sqm size each*
- *directly benefiting 2,800 farmers*

**...having members of the 2nd generation farmer-families as
the operators. They are those who...**

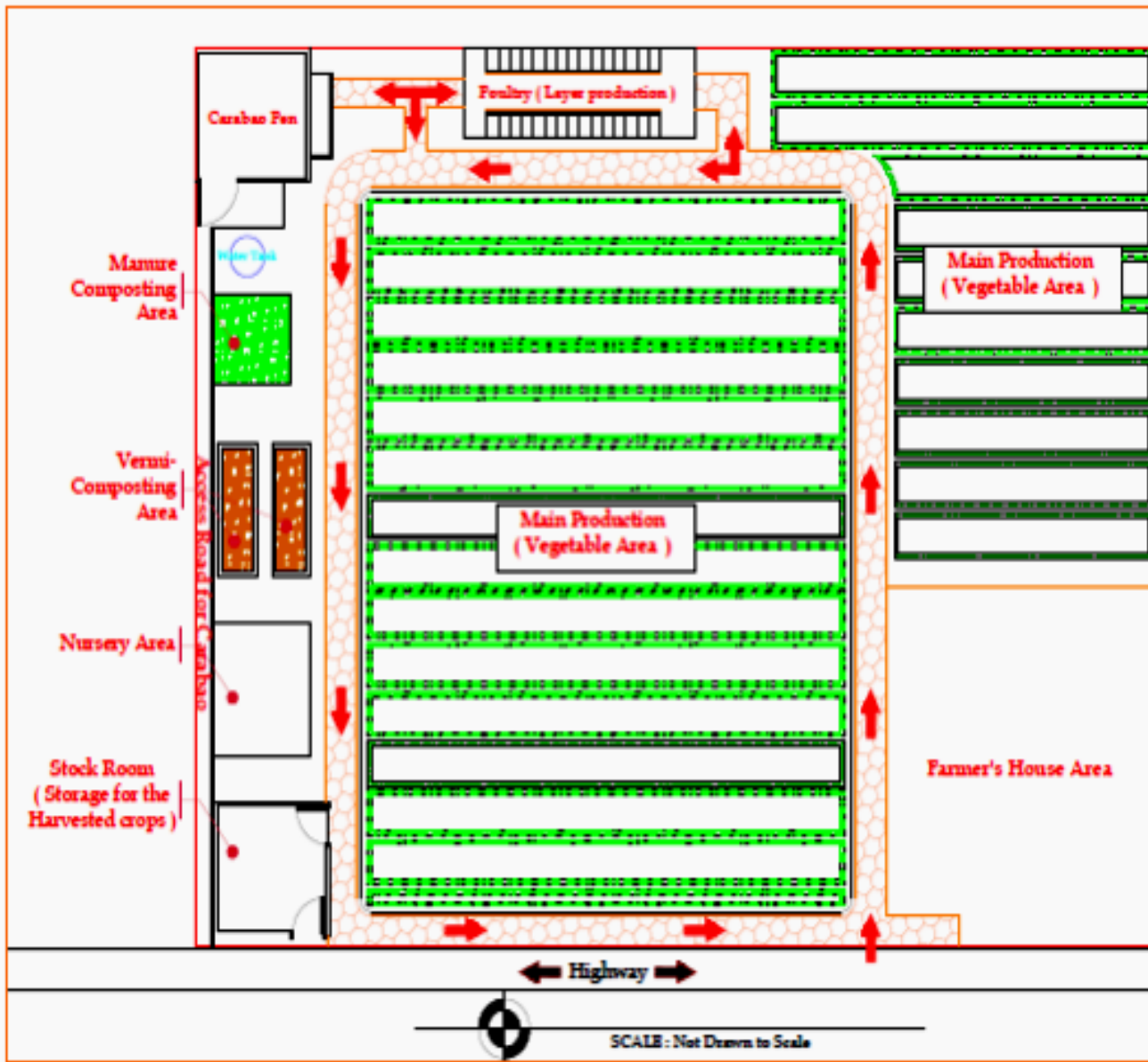
- *completed the Lamac Integrated Farm School education*
- *have shown the desire to cultivate and develop farming*



FEATURES AND INVESTMENT

- SOFT has pre-established package of house and farm plan for each lot based on a profitable production.
 - *Crops, livestock and other farm inputs supplied by LMPC. The co-op, as aggregator, distributes farm products to market*
 - *Cost per lot: PhP 250,000.00*
 - *Total for 60 lots: PhP 15M*
- SOFT is a self-sustaining farm village with hybrid renewable energy sources, centralized biogas sewage, communal water system, road network and amenities.
 - *Cost of SOFT development: PhP 20M*

SOFT FARM LOT DESIGN



1. Farmer's House Area = 56 sqm
2. Vegetable Plant Area = 300 sqm
3. Carabao Pen Area = 9.0 sqm
(Dimension = $3m \times 3m$)
4. Nursery Area = 6.0 sqm
(Dimension = $3m \times 3m$)
5. Vermi-Compost Area = 6.0 sqm
(Dimension = $1m \times 3m \times 2units$)
6. Storage Area = 9.0 sqm
(Dimension = $3m \times 3m$)
7. Poultry (30 heads) = 12.00 sqm
(Dimension = $2m \times 6m$)

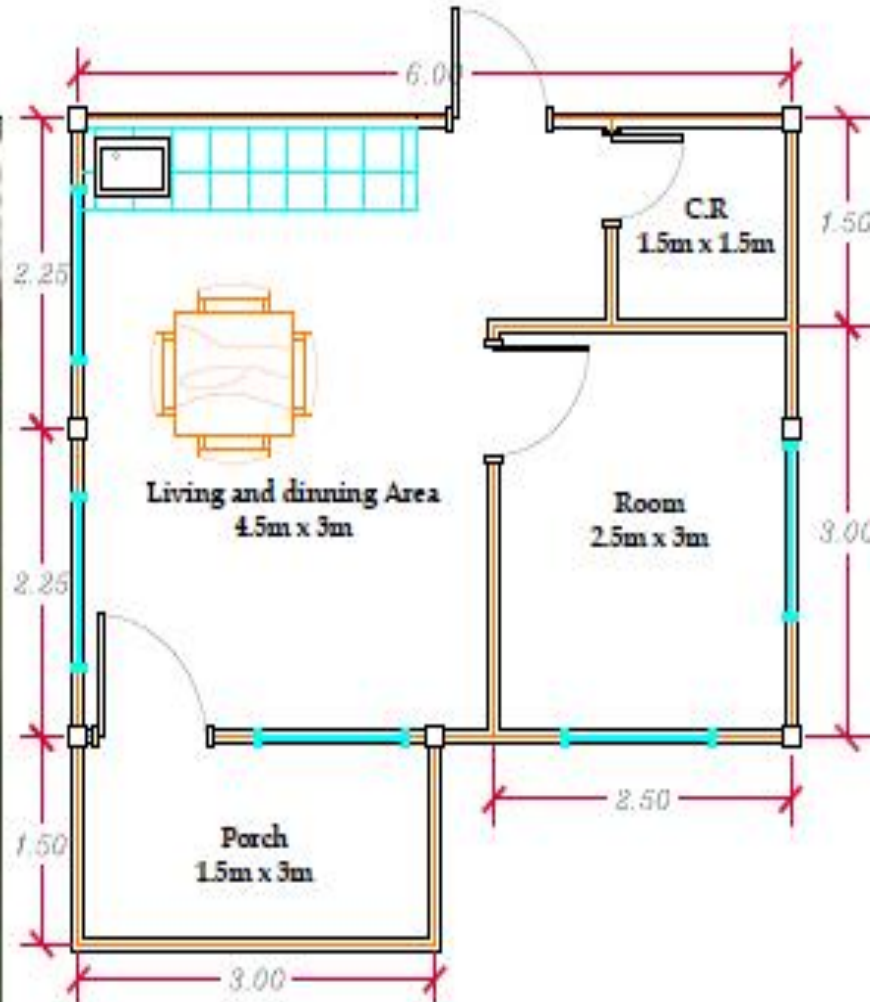
Total Lot Area = 500.00 sqm

FARMER'S SOFT ABODE



PERSPECTIVE VIEW

SCALE : Not Drawn to Scale



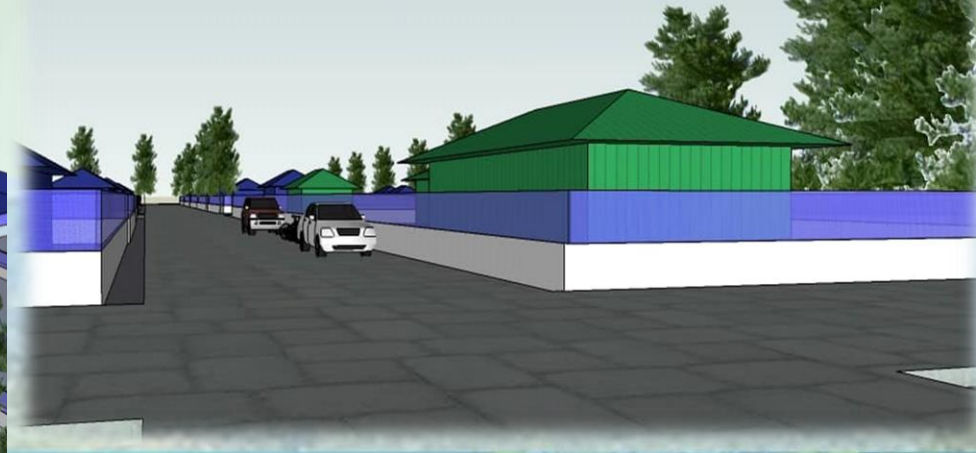
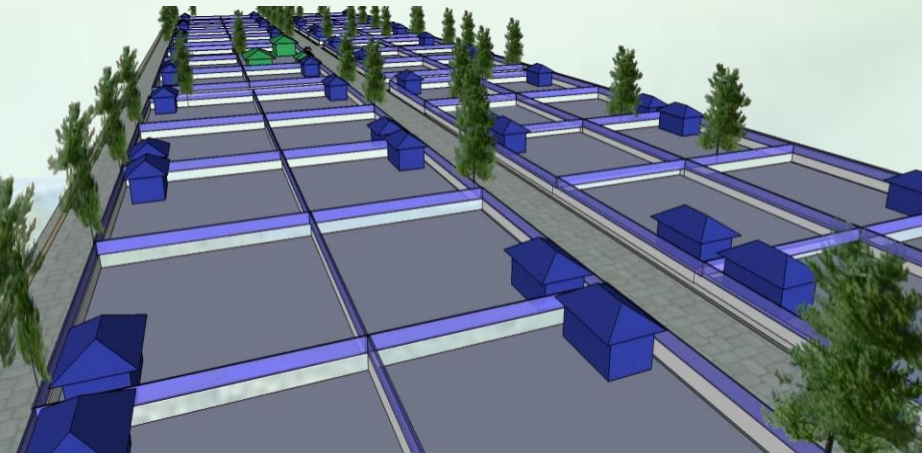
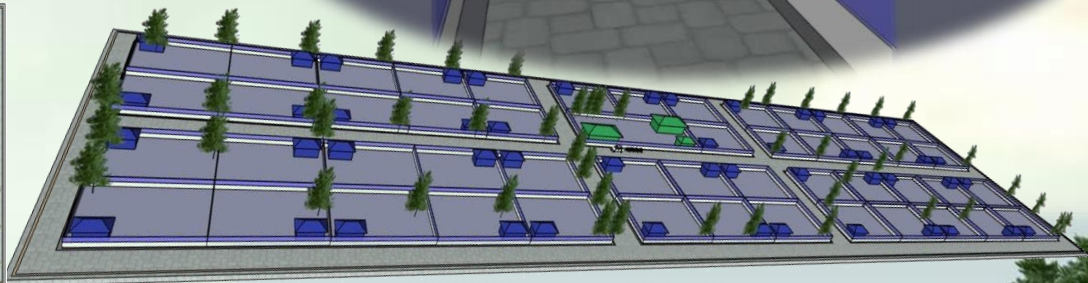
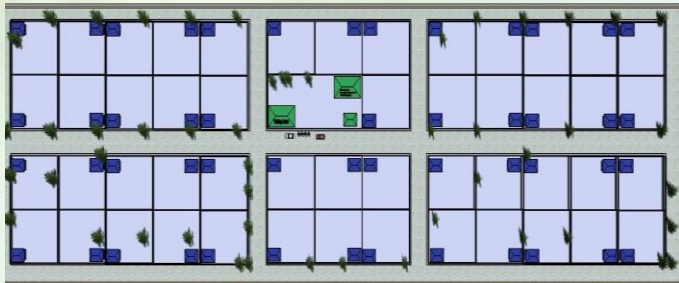
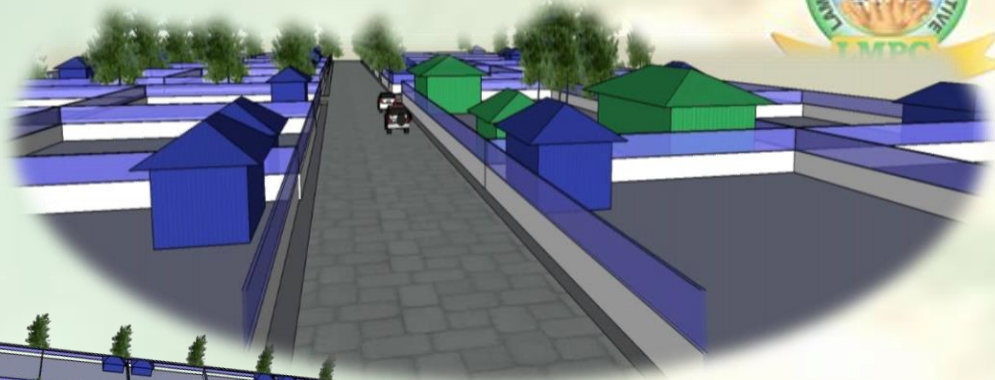
Bahay Kubo Floor Plan

SCALE : 1 : 50m

As I speak in front of you, construction plans of SOFT is starting for the (2nd generation) 60 farmer-families in a 3 hectare lot.



**PERSPECTIVE: SOFT
COMMUNITY OF SOCIALLY-
LIBERATED FARMER-FAMILIES**



MOVING BEYOND TOURISM...



There is no final frontier, only the next.

THE MISSION OF *RESPONDING TO THE HOLISTIC EMPOWERMENT NEEDS OF THE VULNERABLE SECTORS* REMAINS A STRONG CHALLENGE FOR THE YOUTH; AND THERE IS NO BETTER WAY OF FACING IT UP TO THAN TO BE ENGAGED.

Thank you for the opportunity, faith and support.

God willing, I remain

**Justine Lyn C. Limocon
Business Development Head, LMPC**



BEST COOP PITCH

Bali, Indonesia

Awarded by International Cooperative Alliance
During the ICA-AP International Coop Youth Summit



JOE BIDEN AWARD

London, United Kingdom

Credit Union Development Educator of the year for
Asia and a special award as the Edward Filene Credit
union Awards for excellence Great Britain.



ICA ASIA PACIFIC COOPERATIVE YOUTH SUMMIT



Build Up
Capability

Gender
Equality

Hub
Business Ventures



ICA ASIA PACIFIC COOPERATIVE YOUTH SUMMIT – AGRI IMMERSION





WORLD DEVELOPMENT EDUCATORS – AGRI IMMERSION





UNITED KINGDOM DEVELOPMENT EDUCATORS – AGRI IMMERSION



17 PARTNERSHIPS FOR THE GOALS



CYP Lab Co-op Partners



VICTO National



Jollibee Foods
CORPORATION



“

**BEING YOUNG IS NOT
AN EXCUSE TO DO
GREATNESS**





“

**“YOUTH ARE NOT
LEADERS OF THE FUTURE,
WE ARE LEADERS OF
TODAY”**





Christ in Cooperatives.. is Our Hope of Glory





Aflatoun
Savings Generation
Membership

T O G O D
B E T H E
G L O R Y

Build
Capability Build Up

Gender
Equality



HUB
Business Ventures